

Ceiling Recessed,
High Static, Large Air Volume Model
4-Row Cooling/Heating

**TCRH-[1000
1200
1600
2000]-4HW-4R-DRC**
-Z/P/PW/PC

**TCRH-[1000
1200
1600
2000]-4HW-4R-DRE**
-Z/P/PW/PC



240V

Specification

Unit Size		1000	1200	1600	2000
Air Volume l/s	H	639	678	911	1074
	M	608	665	876	1048
	L	560	624	823	986
Cooling Capacity KW	SH	7.7	8.2	11.0	13.4
	TH	11.3	11.1	15.5	20.1
Heating Capacity KW		20.9	22.4	29.6	37.0
Water Flow l/s		0.55	0.54	0.74	0.96
W.P.D. kPa		23	5	10	19
Input Power W		427	445	626	768
Running Current A		1.82	1.91	2.64	3.30
Noise dB(A)	H	56.5	57.5	59.0	59.0
	M	55.5	57.0	58.0	58.0
	L	54.5	56.0	57.0	56.5
Weight kg (without plenum)		40	46	60	72
Weight kg (with plenum)		44	52	68	82
Holding Water Volume L		3.1	3.9	4.5	5.7
Casing		Galvanized Steel			
Fan		Galvanized sheet fabricated, Forward-Curved DIDW Fan			
Motor		3-Speed, PSC with Capacitor Cap and Flexible Conduit			
Power Source		AC240V, 50Hz, Single Phase			
Coil		Slit Surfaced, Aluminum Finned Coil complete with Female Sockets at Inlet/Outlet Conn. And Air Vent			
Operating Pressure		Max 1700kPa (250psig) unless otherwise specified			
Drain Pan		Stainless Steel, SUS430			

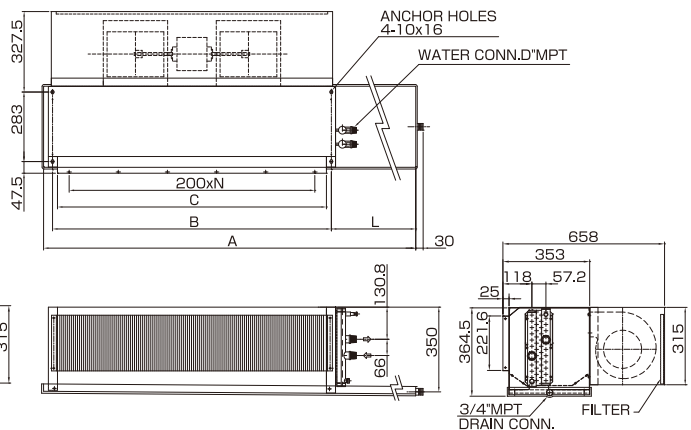
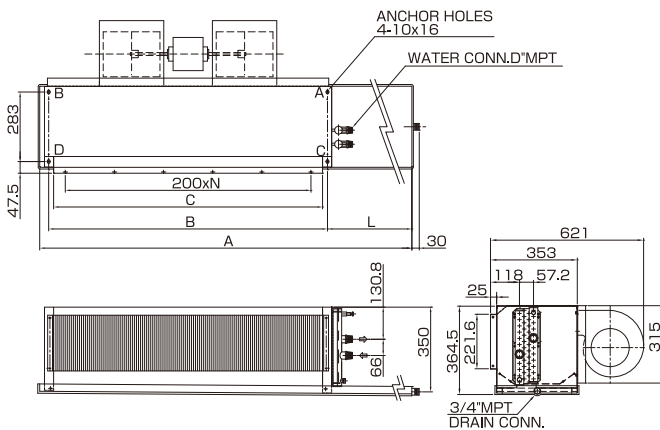
Note:

- Cooling capacity is based on DB24°C, WB17.8°C, EWT7°C, LWT12°C.
- Heating capacity is based on DB20°C, EWT60, same water flow as cooling.
- Cooling/Heating Capacity, Input Power, Running Current are based on H speed.
- Noise is measured at an anechoic chamber, 1m from the unit surface.
- Running current may change according to the conditions.
- Air volume is based on ESP 100Pa.

Dimensions

Without Plenum **TCRH-4HW-4R-DRC-Z** **TCRH-4HW-4R-DRE-Z**
TCRH-4HW-4R-DRC15-Z **TCRH-4HW-4R-DRE15-Z**

With Plenum **TCRH-4HW-4R-DRC-P/PW/PC** **TCRH-4HW-4R-DRE-P/PW/PC**
TCRH-4HW-4R-DRC15-P/PW/PC **TCRH-4HW-4R-DRE15-P/PW/PC**



Unit Size	-Z/P/PW/PE/PC		15-Z/P/PW/PE/PC		B	C	N	D	NO. OF FAN	NO. OF MOTOR
	A	L	A	L						
TCRH-1000-4HW-4R-DRC(E)	1050	122	1200	272	885	847	4	1	2	1
TCRH-1200-4HW-4R-DRC(E)	1335	157	1485	307	1135	1097	5	1	2	1
TCRH-1600-4HW-4R-DRC(E)	1505	122	1655	272	1340	1302	6	1	3	2
TCRH-2000-4HW-4R-DRC(E)	1935	122	2085	272	1770	1732	7	1-1/4	4	2

Note:

- Right hand unit is shown.
- Furnish access door to service fan motor.
- Wiring works between motor and switch, and unit to power source by contractors.
- Unit shall be mounted horizontally.
- To prevent condensation, fan interlock valve shall be furnished so that water supply will be stopped when fan is off.