

Ceiling Recessed,
High Static, Large Air Volume Model
4-Row Cooling, 1-Row Heating

TCRH-4HW-DC3-DRC
-Z/P/PW/PC

TCRH-4HW-DC3-DRE
-Z/P/PW/PE



240V

Specification

Unit Size		600	1000	1200	1600	2000
Air Volume l/s	H	361	559	623	832	989
	M	346	536	611	805	961
	L	323	504	582	770	911
Cooling Capacity KW	SH	4.6	6.9	7.6	10.2	12.5
	TH	6.3	10.2	10.3	14.4	18.8
Heating Capacity KW		4.4	6.6	7.6	9.9	12.6
Water Flow l/s		0.31	0.49	0.5	0.69	0.9
W.P.D. kPa		7	19	4	8	17
Input Power W		261	389	422	594	726
Running Current A		1.08	1.68	1.82	2.52	3.15
Noise dB(A)	H	55.5	54.5	56.0	57.5	56.5
	M	55.0	54.0	56.0	56.5	55.5
	L	54.0	53.0	55.5	56.0	54.5
Weight kg (without plenum)		57	56.5	57.5	59	59
Weight kg (with plenum)		56	55.5	57	58	58
Holding Water Volume L		55.0	54.5	56.0	57.0	56.5
Casing		Galvanized Steel				
Fan		Galvanized sheet fabricated, Forward-Curved DIDW Fan				
Motor		3-Speed, PSC with Capacitor Cap and Flexible Conduit				
Power Source		AC240V, 50Hz, Single Phase				
Coil		Slit Surfaced, Aluminum Finned Coil complete with Female Sockets at Inlet/Outlet Conn. And Air Vent				
Operating Pressure		Max 1700kPa (250psig) unless otherwise specified				
Drain Pan		Stainless Steel, SUS430				

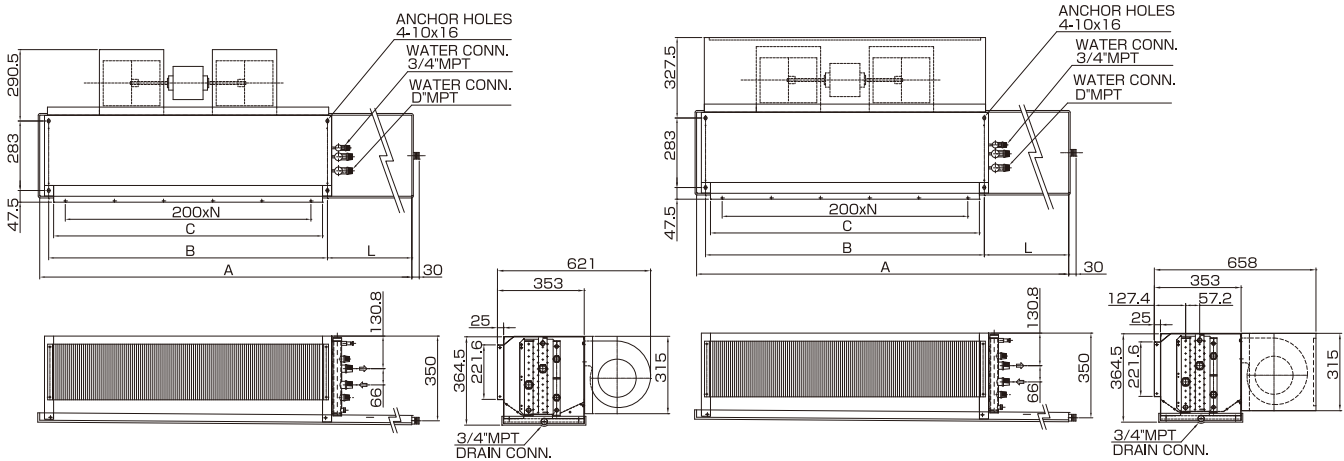
Note:

- Cooling capacity is based on DB24°C, WB17.8°C, EWT7°C, LWT12°C.
- Heating capacity is based on DB20°C, EWT60, 20% of the water flow during cooling.
- Cooling/Heating Capacity, Input Power, Running Current are based on H speed.
- Noise is measured at an anechoic chamber, 1m from the unit surface.
- Running current may change according to the conditions.
- Air volume is based on ESP 100Pa.

Dimensions

Without Plenum **TCRH-4HW-DC3-DRC-Z** **TCRH-4HW-DC3-DRE-Z**
TCRH-4HW-DC3-DRC15-Z **TCRH-4HW-DC3-DRE15-Z**

With Plenum **TCRH-4HW-DC3-DRC-P/PW/PC** **TCRH-4HW-DC3-DRE-P/PW/PC**
TCRH-4HW-DC3-DRC15-P/PW/PC **TCRH-4HW-DC3-DRE15-P/PW/PC**



Unit Size	-Z/P/PW/PE/PC		15-Z/P/PW/PE/PC		B	C	N	D	NO. OF FAN	NO. OF MOTOR
	A	L	A	L						
TCRH- 600-4HW-DC3-DRC(E)	906	191.4	1056	131.4	690	652	3	1	1	1
TCRH-1000-4HW-DC3-DRC(E)	1050	122	1200	272	885	847	4	1	2	1
TCRH-1200-4HW-DC3-DRC(E)	1335	157	1485	307	1135	1097	5	1	2	1
TCRH-1600-4HW-DC3-DRC(E)	1505	122	1655	272	1340	1302	6	1	3	2
TCRH-2000-4HW-DC3-DRC(E)	1935	122	2085	272	1770	1732	7	1-1/4	4	2

Note:

- Right hand unit is shown.
- Furnish access door to service fan motor.
- Wiring works between motor and switch, and unit to power source by contractors.
- Unit shall be mounted horizontally.
- To prevent condensation, fan interlock valve shall be furnished so that water supply will be stopped when fan is off.