

Ceiling Recessed,  
High Static, Large Air Volume Model  
4-Row Cooling/Heating

**TCRH-600-4HW-4R-DRC**  
**-Z/P/PW/PC**

**TCRH-600-4HW-4R-DRE**  
**-Z/P/PW/PE**



**240V**

**Specification**

Unit Size		600
Air Volume l/s	H	402
	M	381
	L	349
Cooling Capacity KW	SH	4.9
	TH	6.8
Heating Capacity KW		13.4
Water Flow l/s		0.33
W.P.D. kPa		22
Input Power W		281
Running Current A		1.16
Noise dB(A)	H	57.0
	M	56.0
	L	55.0
Weight kg (without plenum)		35
Weight kg (with plenum)		37
Holding Water Volume L		2.6
Casing		Galvanized Steel
Fan		Galvanized sheet fabricated, Forward-Curved DIDW Fan
Motor		3-Speed, PSC with Capacitor Cap and Flexible Conduit
Power Source		AC240V, 50Hz, Single Phase
Coil		Slit Surfaced, Aluminum Finned Coil complete with Female Sockets at Inlet/Outlet Conn. And Air Vent
Operating Pressure		Max 1700kPa (250psig) unless otherwise specified
Drain Pan		Stainless Steel, SUS430

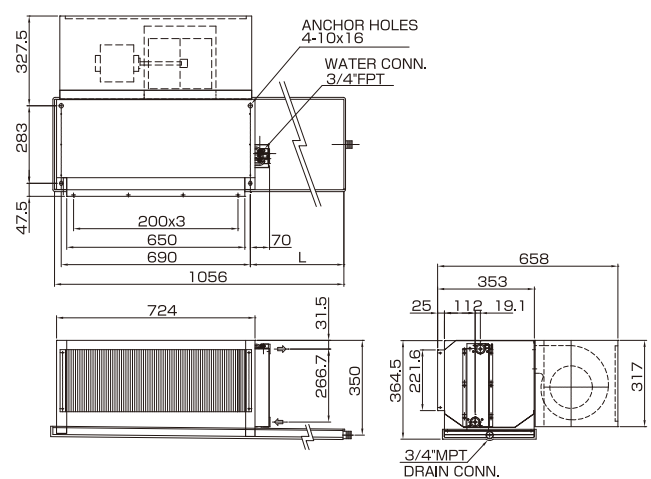
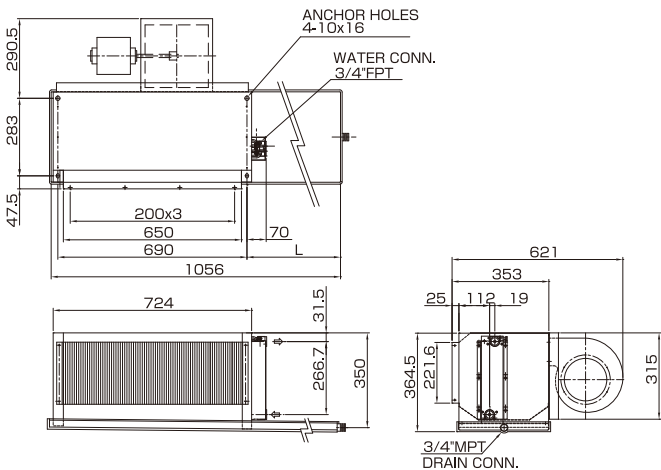
Note:

- Cooling capacity is based on DB24°C, WB17.8°C, EWT7°C, LWT12°C.
- Heating capacity is based on DB20°C, EWT60, same water flow as cooling.
- Cooling/Heating Capacity, Input Power, Running Current are based on H speed.
- Noise is measured at an anechoic chamber, 1m from the unit surface.
- Running current may change according to the conditions.
- Air volume is based on ESP 100Pa.

**Dimensions**

Without Plenum **TCRH-600-4HW-4R-DRC-Z**  
**TCRH-600-4HW-4R-DRC15-Z**  
**TCRH-600-4HW-4R-DRE-Z**  
**TCRH-600-4HW-4R-DRE15-Z**

With Plenum **TCRH-600-4HW-4R-DRC-P/PW/PC**  
**TCRH-600-4HW-4R-DRC15-P/PW/PC**  
**TCRH-600-4HW-4R-DRE-P/PW/PC**  
**TCRH-600-4HW-4R-DRE15-P/PW/PC**



Unit Size	-Z/P/PW/PE/PC	15-Z/P/PW/PE/PC
	L	L
TCRH- 600-4HW-4R-DRC(E)	191.4	341.4

Note:

- Right hand unit is shown.
- Furnish access door to service fan motor.
- Wiring works between motor and switch, and unit to power source by contractors.
- Unit shall be mounted horizontally.
- To prevent condensation, fan interlock valve shall be furnished so that water supply will be stopped when fan is off.