

Ceiling Recessed,
High Static, Large Air Volume Model
4-Row Cooling/Heating

TCRH-600-2HW-4R-DRC
-Z/P/PW/PC

TCRH-600-2HW-4R-DRE
-Z/P/PW/PE



220V

Specification

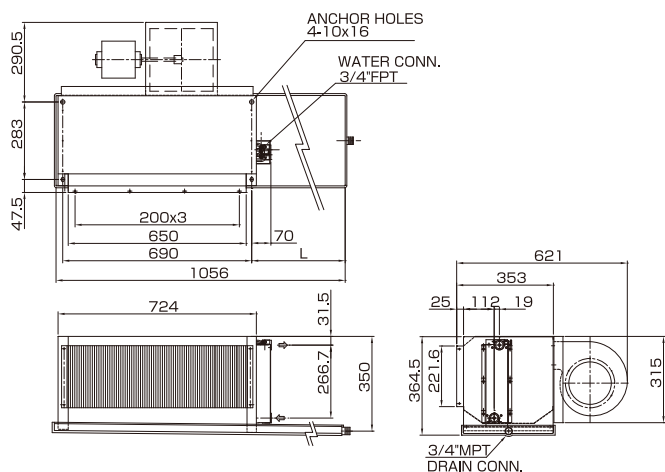
Unit Size		600
Air Volume l/s	H	390
	M	356
	L	315
Cooling Capacity KW	SH	4.8
	TH	6.6
Heating Capacity KW		13.1
Water Flow l/s		0.32
W.P.D. kPa		21
Input Power W		262
Running Current A		1.18
Noise dB(A)	H	56.5
	M	55.0
	L	53.0
Weight kg (without plenum)		35
Weight kg (with plenum)		37
Holding Water Volume L		2.6
Casing		Galvanized Steel
Fan		Galvanized sheet fabricated, Forward-Curved DIDW Fan
Motor		3-Speed, PSC with Capacitor Cap and Flexible Conduit
Power Source		AC220V, 50Hz, Single Phase
Coil		Slit Surfaced, Aluminum Finned Coil complete with Female Sockets at Inlet/Outlet Conn. And Air Vent
Operating Pressure		Max 1700kPa (250psig) unless otherwise specified
Drain Pan		Stainless Steel, SUS430

Note:

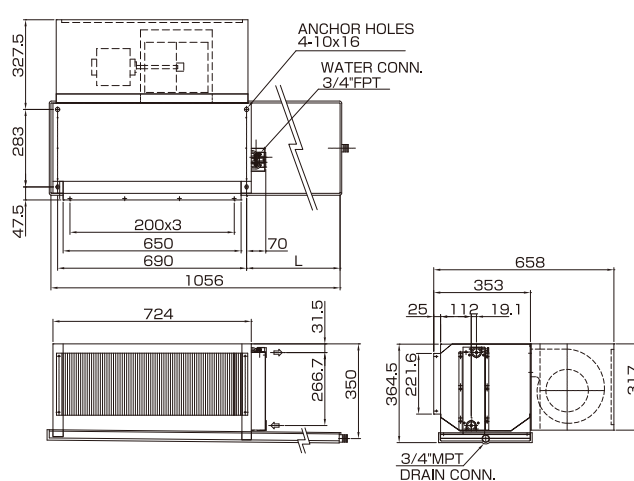
- Cooling capacity is based on DB24°C, WB17.8°C, EWT7°C, LWT12°C.
- Heating capacity is based on DB20°C, EWT60, same water flow as cooling.
- Cooling/Heating Capacity, Input Power, Running Current are based on H speed.
- Noise is measured at an anechoic chamber, 1m from the unit surface.
- Running current may change according to the conditions.
- Air volume is based on ESP 100Pa. without plenum and filter.

Dimensions

Without Plenum **TCRH-600-2HW-4R-DRC-Z**
TCRH-600-2HW-4R-DRC15-Z
TCRH-600-2HW-4R-DRE-Z
TCRH-600-2HW-4R-DRE15-Z



With Plenum **TCRH-600-2HW-4R-DRC-P/PW/PC**
TCRH-600-2HW-4R-DRC15-P/PW/PC
TCRH-600-2HW-4R-DRE-P/PW/PC
TCRH-600-2HW-4R-DRE15-P/PW/PC



Unit Size	-Z/P/PW/PE/PC	15-Z/P/PW/PE/PC
	L	L
TCRH- 600-2HW-4R-DRC(E)	191.4	341.4

Note:

- Right hand unit is shown.
- Furnish access door to service fan motor.
- Wiring works between motor and switch, and unit to power source by contractors.
- Unit shall be mounted horizontally.
- To prevent condensation, fan interlock valve shall be furnished so that water supply will be stopped when fan is off.